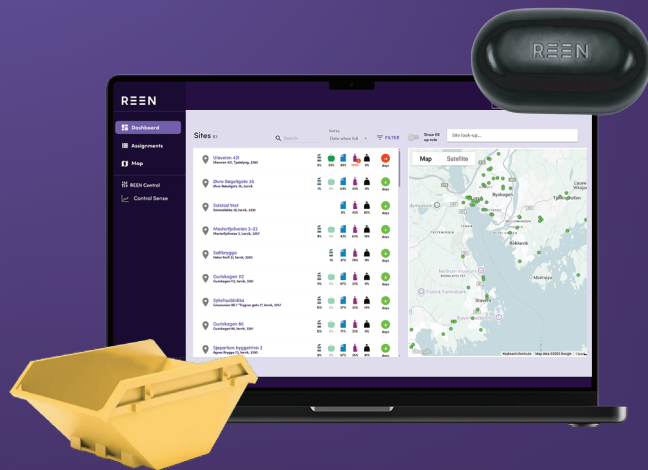


Gain Full Control of Your Containers and Asset Inventory with Real-Time GPS Tracking

REEN CMS Asset is an advanced Container Management Solution that delivers full control and visibility over containers, skips, machines, and high-value mobile assets across depots, warehouses, and field sites.



Powered by GPS trackers it enables real-time asset identification, positioning, and health monitoring with an interactive digital map and analytics platform for actionable insights into asset utilisation, condition, and location.

By enhancing visibility and traceability, it reduces theft risk, increases transparency, and eliminates manual tracking. REEN CMS Asset supports smarter logistics, optimised order management, and resource efficiency - driving rapid ROI per asset, improving fleet sustainability, and long-term profitability.

Eliminate Lost Assets, Speed Up Response Times, and Streamline Operations

Maximise Asset Visibility, Reduce Costs, and Improve Operational Efficiency



Optimise container allocation and inventory to cut inefficiencies, operational costs, & excess stock



Plan maintenance proactively and precisely to maximise uptime and avoid service delays



Gain full visibility and control over container conditions, locations, & warehouse inventory across all sites



Strengthen security and responsiveness with full traceability and real-time tracking, geo-fencing and instant alerts for abnormal movements



Streamline distribution and order management to minimise downtime, complaints, and boost customer satisfaction



Leverage data-driven insights for smarter decisions with usage analytics, trend forecasting, and operational efficiency

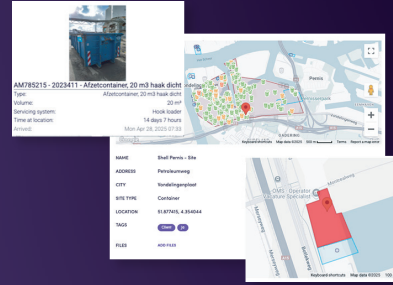
REEN CMS Asset in Action

1



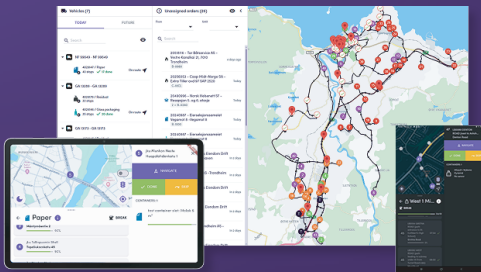
GPS sensors and QR codes capture real-time location capture real-time location, identity, and condition on a digital map and asset register for all sites

2



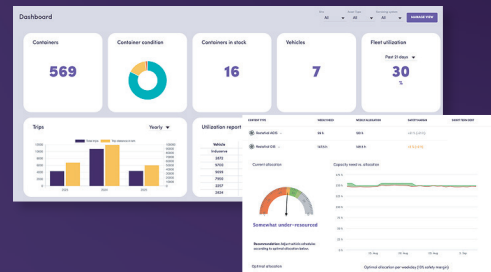
Digital mapping and geofences provide live visibility, full traceability and accurate asset inventory with instant alerts for movement, location breaches, or idle assets

3



The Advanced Routes App optimises order management, service requests and task allocation with route optimised navigation, ensuring timely deliveries and resource efficiency

4



Performance dashboards, usage analytics, and asset health data support smarter maintenance scheduling, resource allocation, and ROI tracking - boosting operational efficiency and profitability

Smart Tracking Drives Asset Visibility & Operational Excellence for Stronger ROIs



Reduce Cost

Resources
Time
Efficiency



Improved Control

Asset visibility
Reporting planning
Data empowered



Increase Efficiencies

Fuel
CO₂ Emissions
Journey time



Manage Risk

Theft
Insurance
Customer complaints

